



FEBRUARY 2026

# THE QUAKER QUILL

## Details Inside:

Pastor's Note....

News & Events

Memorials

Calendar

Page 2

Page 4-8

Page 9

Page 10



## A WORD FROM OUR PASTOR

Greetings to One & All,

I hope that everyone is staying warm and safe these days. I am writing this from my warm office and grateful to all who made it safe for me to travel from my house to the church but I am very aware that many people in our community are still icebound in the wake of the latest Winter Storm...and I'm watching the weather forecast for the coming days praying that the predicted snow will not come. Thanks to the weather, we had to reschedule our Rise Against Hunger Packing event and hope that everyone will come on February 15 to help us pack 10,000 meals. What a beautiful way to be the hands and feet of Christ for our neighbors.

For the 2026 budget the session had to make some tough decisions and one of those was to decrease our financial gifts to some of our local mission partners. This does not diminish our partnerships, just shifts our support to new ways. The Mission Committee hopes to increase opportunities of hands on work in 2026. They are looking ahead to Birthday Boxes for Meals on Wheels, Food For Thought Snack Drive and Christmas Angels but they also hope provide more opportunities. We have pledged to be a part of the 2026 Habitat for Humanity Faith Build...more information about that will be coming soon. We hope to schedule work days for Quaker volunteers at Park View Food for Thought, Salvation Army, Lynchburg Daily Bread and the Interfaith Outreach Warehouse.

Lent begins this month with Ash Wednesday, February 18...I hope everyone will join us during this season as we journey to the cross and the empty tomb. Lent is a season to struggle with what it means to be human and it feels like we are watching the worst and the best of humanity play out everyday. Our theme is Threads...a beautiful symbol to embrace not just the ways we are all woven together in the Story of God but also a reminder of how it often feels like everything is unraveling and will the world ever be healed and whole.

I close with this beautiful charge as a reminder that we are the Body of Christ...when it feels like all is so broken and hopeless in our world, sometimes the best way to make it better is to just start in our own little corner.

Christ has no body but yours,  
No hands, no feet on earth but yours,  
Yours are the eyes with which he looks compassion on this world,  
Yours are the feet with which he walks to do good,  
Yours are the hands with which he blesses all the world.  
Yours are the hands, yours are the feet, yours are the eyes, you are his body.  
Christ has no body now but yours,  
No hands, no feet on earth but yours,  
Yours are the eyes with which he looks compassion on this world.  
Christ has no body now on earth but yours.

Teresa of Avila 14th century

Grace & Light,  
Anghaarad

# NEWS & EVENTS



## **COFFEE WITH THE PASTOR**

Join Anghaarad for coffee at The Bagel & I at 20584 Timberlake Road on Monday, February 23 from 10 am to noon. Come for a cup of coffee, tea or even breakfast and great conversation...this is a wonderfully relaxing time for all members of Quaker and friends.



This month **Lunch Bunch** will head to Liberty Station in Bedford. Join us on Wednesday, February 18 at 11:30 am. We will need to give a final head count to the restaurant by Monday, February 16 so please RSVP to Sara Curtis by text, call 434-941-3349 or email her at [buzzandsara@gmail.com](mailto:buzzandsara@gmail.com).

## **WOMEN'S BIBLE STUDY**

...is finishing up our study on Rachel Held Evan's *Inspired* and will begin a new study beginning on February 11 at 6pm in the library.



After worship on February 8, our youth will be collecting dollars in soup pots to help tackle hunger. The money collected will support Rise Against Hunger. Thank you in advance for your generosity.



**THERE WILL BE NO  
WELCOME TABLE POTLUCK DINNER AND  
HYMN SING IN FEBRUARY.  
WE WILL RESUME GATHERING IN MARCH.**

# NEWS & EVENTS

## SESSION HIGHLIGHTS FROM JANUARY

- Examined and received newly installed elders
- Set committee assignments for the new year...

Appointed committee chairs:

- Budget, Stewardship & Finance: Kent Ford
- Care & Nurture: Molly Garbee
- Discipleship: Josie Miller & Raye Reynolds
- Mission: Amanda Stanbury
- Property: TBD
- Worship: Ray Paige & David Webb
- Elected Gail Midkiff as Clerk and re-elected Sara Curtis as Treasurer
- Approved the 2026 budget; copies available in the office
- Agreed for QMPC to serve as a backup voting site for Precincts 301-304
- Next meeting date pending because of the Rise Against Hunger schedule change

**Meeting  
Rescheduled**

Due to the weather and the predicted forecast, the Congregational Meeting scheduled for February 1st will be moved to February 8th as will the Sacrament of Holy Communion.

## LIBRARY CLEANING & ORGANIZING

We hope to begin a deep clean of the library as well as some organizing and purging on Saturday, February 7th as part of the Worker Bees and will continue the work through the next week...if you would like to assist with this work, please let Anghaarad know.

## DAN WEIGAND SCHOLARSHIP

The purpose of the Dan Weigand Educational Fund is to provide financial assistance to those persons who are seeking an undergraduate degree or trade school certification. Any person who lives in, or whose family lives in, the greater Lynchburg area is eligible to apply. Applications can be obtained through the church office (office@qmpc.org).

**APPLICATION DEADLINE- APRIL 15, 2026**



# NEWS & EVENTS



**I give you a new commandment, that you love one another. Just as I have loved you, you also should love one another. By this everyone will know that you are my disciples, if you have love for one another.'**

**John 13:34-25**



## **RISE AGAINST HUNGER**

### **Packing Event**

**February 15 after Worship**

**Plan to stay after worship to help us  
pack meals for our longtime Mission Partner,  
Rise Against Hunger.**

**We will need a group of volunteers to come before worship to  
help set up & unload the truck.**

# NEWS & EVENTS

ASH WEDNESDAY SERVICE

FEBRUARY 18

7:00PM

SANCTUARY

THREADS  
*Lent 2026*

THREADS  
*Lent 2026*

Lent is a season to struggle with what it means to be human. To be human is to be interconnected not only to one another, but to God. A tapestry is a beautiful metaphor of how each individual is a unique thread, woven together by God's love and purpose to create a beautiful and intricate design. But what do we do when it feels like everything is coming unravelled?

For 40 days we will explore through worship, prayer centers, art, & study our interconnectedness & our place in the story of God.

# NEWS & EVENTS

## **PROPERTY COMMITTEE NEWS**

The Property Committee would like to extend a huge THANK YOU to Lewis & Molly Garbee for clearing the parking lot after these snow events. A huge THANK YOU also goes out to the members of the Property Committee who have shoveled and salted the walkways and steps. Not only are they clearing the front entrance so that members and staff can safely enter, but they are also clearing the back entrance and new sidewalk so that the Free Clinic workers and patients can safely access the building.

The Property Committee has been busy with the following items:

- Installed a space heater in the main level women's restroom
- Converted the outside sign from digital to static
- Boiler inspection
- Installed additional landscape lighting to illuminate outside sign
- Repaired pews
- Assisted with decorating/undecorating the church for Christmas
- Replaced light bulbs where needed
- Fixed the paper folding machine
- Shoveled & salted sidewalks after snow events
- Southern Air conducted a maintenance check and bled air from the radiators
- Installed guards over outside light switches

## **WORKER BEES-FEBRUARY 7: 9:00-NOON**

Plan to come help with projects around the church property.

This month's projects include:

- Reorganize books in church library
- Repair Pews
- Catalog items and their location in the church
- Repair light fixtures, as needed
- Replace light bulbs, as needed
- Continue organizing history room
- Remove trash from hymnal racks and choir loft area

Our next meeting is Wednesday, February 11 at 6:30pm in the Library.

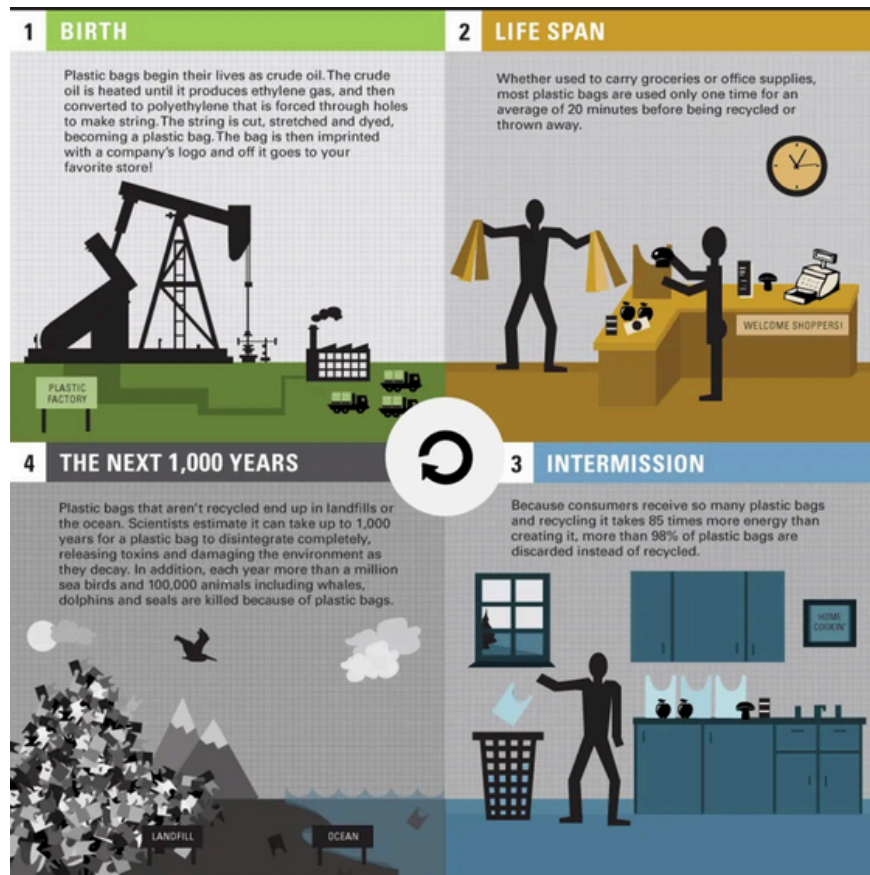


# NEWS & EVENTS

## EARTH CARE NEWS

### The Life Cycle of a Plastic Bag

The life cycle of a plastic bag involves extracting fossil fuels, manufacturing, a brief use (often only minutes), and then a long afterlife in landfills or the environment. It can take hundreds to a thousand years to break down, fragmenting into harmful micro plastics that pollute soil, water, and harm wildlife. The journey highlights a massive imbalance between its short utility and its extensive, detrimental persistence in ecosystems.



### What Can We Do?

**Reduce** – Use reusable shopping bags, not just for groceries, but for all your shopping.

**Reuse** – Bring your bags to church and place them in the box for reuse by Daily Bread.

Use as packing material.

Cut into strips and crochet into mats.

**Recycle** – Take your bags back to the grocery store and place them in the recycle bin there.

\*Graphic from [factorydirectpromos.com](http://factorydirectpromos.com)

\*Article composed with assistance from AI



## **MEMORIALS FOR JANUARY**

**In memory of Colin L. Mize  
for Youth Scholarship Fund**

**Given by:**  
Nancy Mize

### **Online Giving Available**

Just a reminder that we now offer electronic giving. You can give simply by scanning the QR code to the side or go to our website [www.qmpc.org](http://www.qmpc.org) and click the GIVE NOW button at the top of the page to be taken to our secure site. There is a small fee involved and you will have the option to cover that fee when you give.



# FEBRUARY

2026



Sun	Mon	Tue	Wed	Thu	Fri	Sat
<p>1</p> <p>9am Sunday School</p> <p>10am Worship</p>	<p>2</p> 	<p>3</p> <p>9am Zoom Bible Study</p>	<p>4</p> <p>11:30am Centering Prayer</p> <p>5:30pm Endowment Committee</p> <p>6pm Pray for others at home</p> <p>6pm Women's Bible Study</p>	<p>5</p> <p>7pm Chancel Choir rehearsal</p>	<p>6</p>	<p>7</p> <p>9am</p> 
<p>8</p> <p>9am Sunday School</p> <p>10am Worship &amp; Congregational Meeting</p> 	<p>9</p>	<p>10</p> <p>9am Zoom Bible Study</p> <p>10am Communion at The Summit</p>	<p>11</p> <p>11:30am Centering Prayer</p> <p>6pm Pray for others at home</p> <p>6pm Women's Bible Study</p> <p>6:30pm Property Committee</p>	<p>12</p> <p>7pm Chancel Choir rehearsal</p>	<p>13</p>	<p>14</p> 
<p>15</p> <p>9am Sunday School</p> <p>10am Worship</p> 	<p>16</p> 	<p>17</p> <p>9am Zoom Bible Study</p> <p>6pm Communion at Bentley Commons</p>	<p>18</p> <p>11:30am Centering Prayer</p> <p>11:30 Lunch Bunch</p> <p>6pm Pray for others at home</p> <p>7pm Service</p> 	<p>19</p> <p>3pm Communion at Willow Ridge</p> <p>7pm Chancel Choir rehearsal</p>	<p>20</p>	<p>21</p>
<p>22</p> <p>9am Sunday School</p> <p>10am Worship</p>	<p>23</p> <p>10am to noon Coffee with Pastor at The Bagel &amp; I</p>	<p>24</p> <p>9am Zoom Bible Study</p>	<p>25</p> <p>11:30am Centering Prayer</p> <p>6pm Pray for others at home</p> <p>6pm Women's Bible Study</p>	<p>26</p> <p>7pm Chancel Choir rehearsal</p>	<p>27</p>	<p>28</p>